



TENSATOR®

TENSABARRIER®

Contents Page

THE TENSABARRIER® STORY

PRODUCT INFORMATION GUIDE

Tensabarrier®
Webbing
Cassette

HOW TO ORDER

What to know when placing an order

TENSABARRIER®

POSTS

Base Options
88g Advance
88gT2 Dual Line
88gP Plus Advance
360 Rotating
890 Slimline
RB1 Rollabarrier®
TCL TensaClear™
Tensabarrier® Gallery
886 Facility
875 Popular
885 Outdoor
887 Utility Post
888 Safety Post
SA1 Stowaway Post
TC114 Topper® & Signage Holder

TENSABARRIER®

WALL UNITS

Mounting Options
897 Midi & 899 Maxi
897P Midi Plus
896 Heavy Duty
891 Mini & 892 Recess
Tape End Options

POST COLOUR OPTIONS

Powder Coated Metal,
Stainless, Plastic

WEBBING SELECTION GUIDE

POST TOP SIGNAGE

IQM Accessories

BANNERS

STORAGE CART & TROLLEY

APG

TENSAGUIDE PLUS

ADAPTA RAIL & FIXED RAIL SYSTEM

MAINTAINING CHROME AND BRASS

The Tensabarrier® Story

For over a century, Tensator has been organising the safe and efficient movement of people from point A to point B. As the world's leading queue management and health & safety barrier specialist, we offer a wide range of products that showcase the quality workmanship that has been our hallmark since 1881. Invented in the 1970's and still selling one barrier every 34 seconds, we are confident that the Tensabarrier® remains the industry leading product. With increased competition and the trend towards buying online, more and more customers are making ill-informed purchases. After all, a barrier is a barrier, right? Wrong! As the inventor of the world famous Tensabarrier, Tensator has set the market standard. So why should our customers accept less? Tensabarrier is one of the safest barriers on the market; and unlike copycat products it has a braking system that slows the retraction of the webbing, significantly reducing the risk of an accident.

BUY ONCE, BUY TENSABARRIER®

DID YOU KNOW?

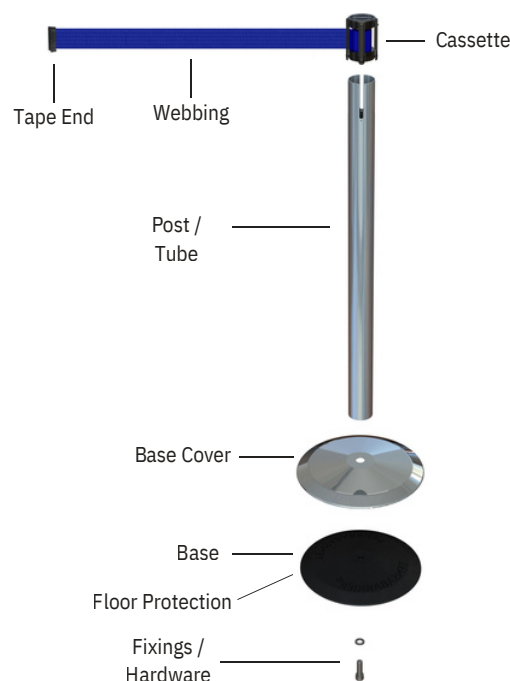
Nobody likes a queue jumper, so the Tensabarrier® has been designed and refined over its lifetime to ensure that, when extended, the webbing is set at the optimum height to prevent the average person from ducking underneath it or stepping over it. It is simple ergonomics that taller posts than the Tensabarrier® encourage webbing duckers, whilst shorter posts encourage step overs. Tensator's Universal base has the lowest leading edge on the market, improving access for people whilst queuing. In busy environments with several barriers, the new Universal base will significantly improve the experience of your customers and will not place a disabled person at a disadvantage.

The post and loader of a Tensabarrier® are pre-assembled in a Tensator® facility using a pneumatic torque gun set to 56Nm / 42lbs of torque, making it very unlikely to come loose, so a factory assembled Tensabarrier® shouldn't be seen leaning over or sleeping on the job! High torque assembly means a Tensabarrier® product is strong, stable and reliable for years to come.

Webbing

The standard webbing used on Tensabarrier® is up to 2x thicker than on copycat products meaning it holds its shape better, withstands multiple retractions without fraying and is less likely to twist or bow. Be wary of copycat products offering seemingly attractive longer standard webbing lengths than Tensabarrier®. These almost always use thinner webbing which simply doesn't perform as well as Tensabarrier®, and certainly won't last as long. If it sounds too good to be true, it usually is!

Choose from a range of standard colours and messages for no extra charge or alternatively upgrade and create your own custom design. All Tensabarrier® webbings are digitally created so your design can use unlimited colours. Tensabarrier webbing is always dye-sublimated which means your logo or message won't scratch or peel off in use, unlike screen print used on poor quality copycats.



Cassette

ANTI-TAMPER DEVICE

Tensabarrier cassettes are fitted as standard with anti-tamper locking pips, which prevent the webbing from being accidentally released.

WEBBING / BELT

Tensabarrier webbing is typically up to 2x thicker than on copycat products. It's woven from military grade fibers so you can be sure it will be hard-wearing and won't break under strain. Copycat webbing might be longer but they are also thinner and far less durable.

TAPE END

Clearly marked with the Tensabarrier® logo, you won't find our tape end on any copycat product. Our branded tape end gives instant assurance and is the ultimate stamp of quality in queue and health & safety barriers.

BRAKE MECHANISM

Features the originally patented safety braking system which slows the retraction of the webbing and tape end when released. Copycat products don't feature this braking system, meaning that tape ends can whip back into the cassette, accelerating at speeds faster than a Formula 1 car from a standing start and causing significant risk to anything in the way.

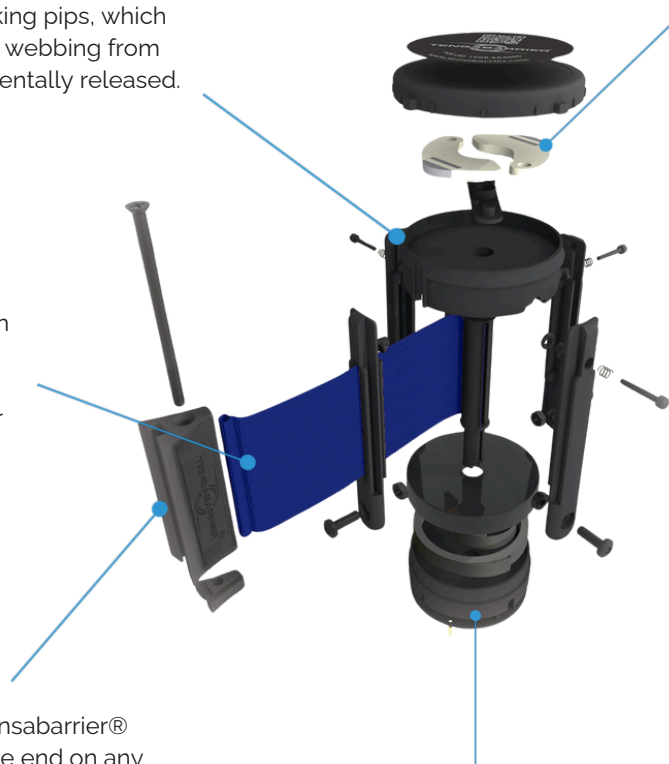
TENSILE SPRING

It may be hidden away at the base of our cassettes, but a Tensabarrier® spring is not just any spring. Unlike those used in copycat products, a Tensabarrier spring is a constant force coiled spring with a conditioned edge reducing the chances of stress fractures or fatigue failure.

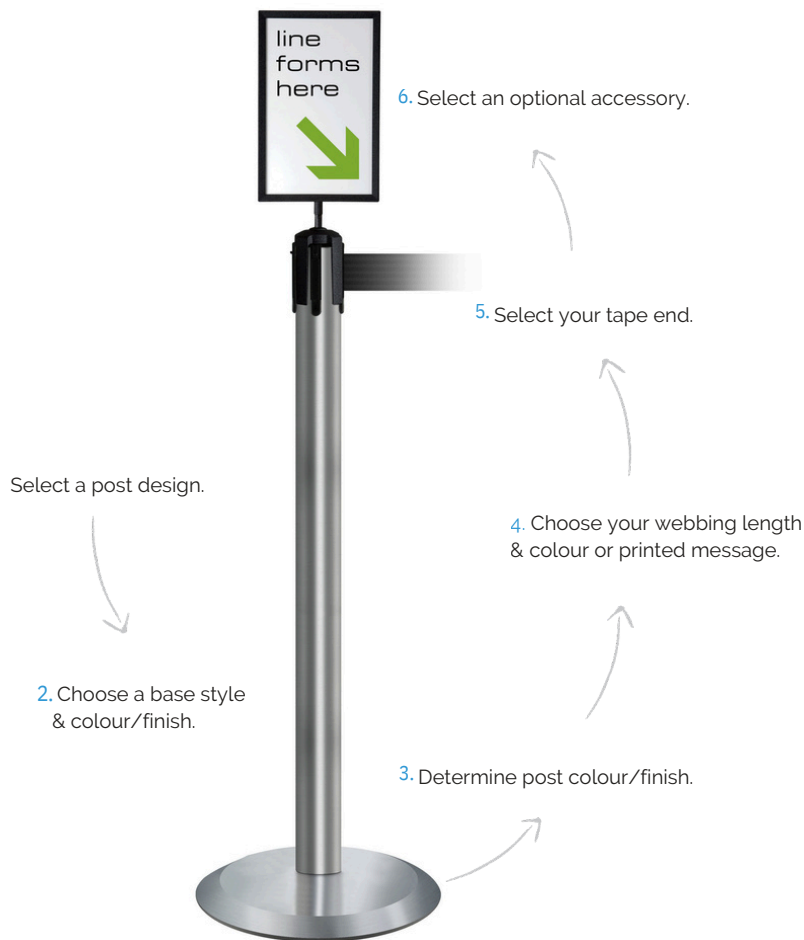
Buy once, buy Tensator.

Replacement Cassettes

All Tensabarriers feature replaceable webbing cassettes. So if your branding changes or you fancy a different colour, you'll have full flexibility to change webbing without needing to buy a new Tensabarrier®.



What To Know When Placing An Order



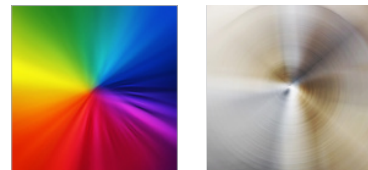
1. SELECT YOUR POST MODEL



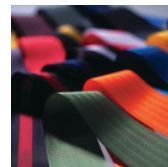
2. CHOOSE A BASE OPTION



3. SELECT A POST FINISH



4. CHOOSE YOUR WEBBING COLOUR & LENGTH



5. SELECT A TAPE END



Standard (STE) for general use



Magnetic (MTE) for emergency exit use



Panic Break (PBTE) for emergency exits where the use of magnets is not permitted



Wire Clip (WCT) for warehouse racking

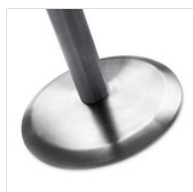


One Way Loop (OWLTE) for single direction emergency use

6. CHOOSE TENSABARRIER® ACCESSORIES (Optional)



TENSABARRIER® BASE OPTIONS



Universal

The slim profile Universal Base is cast iron with a pressed steel cover featuring the lowest leading edges of any barrier on the market. Available in a range of colours & finishes.



Basics

The Basics Base is cast iron covered by a highly durable anti-scuff ABS plastic cover which is perfect for the cost-conscious Tensabarrier® buyer.



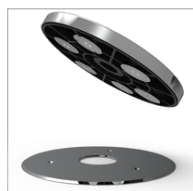
Surface Fixed

For added stability in applications with established traffic patterns this bright chrome finished base is surface fixed to the floor.



Socket Fixed/
Removable

Provides added stability and assist in ensuring that post layouts are always correct. Designed for easy removal and supplied offering the 2 in 1 flexibility of both a permanent and temporary barrier solution.



Magnetic

Magnetic bases combine the stability and location correctness of a fixed base, with the flexibility of a free-standing Tensabarrier®. Six neodymium magnets fitted into the base engage securely with a steel plate which can be flush-fitted into any floor. Barriers can be conveniently removed and re-fitted without the need for floor cover caps.

SPECIALITY TENSABARRIER® BASE OPTIONS (Only available on selected posts)



RollabARRIER®

Features fully serviceable hard-wearing wheels which enable the post to be moved without lifting. Designed to ensure easy set-up and quick storage making it the perfect solution for creating a temporary queue. A patented base with lowest leading edge available.



Heavy Duty

Manufactured from recycled rubber, the heavy duty base can be walked or driven over without losing its shape. A strong and stable barrier, ideal for areas like warehouses or depots.



Outdoor

Easily filled with sand or water when deployed to make up a robust, stable barrier, the empty plastic base of the Outdoor post is lightweight and easy to transport.

889 Advance Post

Featuring unbroken, clean lines, the 889 Advance brings simple elegance to public guidance. A contemporary design combined with all the advanced safety benefits unique to Tensabarrier® make it a perfect solution for all applications.

Universal Base

Order code: 889U-STD: 2.3m webbing | 889U-MAX: 3.65m webbing

Basic Base

Order code: 889B-STD: 2.3m webbing | 889B-MAX: 3.65m webbing

Surface Fixed Base

Order code: 889F-STD: 2.3m webbing | 889F-MAX: 3.65m webbing

Socket Fixed/Removable Base

Order code: 889R-STD: 2.3m webbing | 889R-MAX: 3.65m webbing

Magnetic Base

Order code: 889MAG-STD: 2.3m webbing | 889MAG-MAX: 3.65m webbing



889T2 Dual Line

The ingenious and patented design of Tensator's Advance Dual Line Tensabarrier® features not one but two lines of webbing, providing maximum control, security and safety. The addition of the second lower webbing cassette encapsulated in a single unbroken post is a patented Tensator® innovation. The low level webbing has been set at a level which both discourages line ducking but critically can also be detected by visually impaired patrons using a tapping stick or assisted by a guide dog. Tensator's innovative thinking makes any Tensabarrier® from our wide range of Dual Line posts the considered choice for use in public spaces which are subject to DDA regulations.

Universal Base

Order code: 889T2UH-STD: 2.3m webbing | 889T2UH-MAX: 3.65m webbing

Basic Base

Order code: 889T2BH-STD: 2.3m webbing | 889T2BH-MAX: 3.65m webbing

Surface Fixed Base

Order code: 889T2F-STD: 2.3m webbing | 889T2F-MAX: 3.65m webbing

Socket Fixed/Removable Base

Order code: 889T2R-STD: 2.3m webbing | 889T2R-MAX: 3.65m webbing

Magnetic Base

Order code: 889T2MAG-STD: 2.3m webbing | 889T2MAG-MAX: 3.65m webbing



889P Plus Advance Post

Another Tensabarrier first, the Plus range from Tensator® is the world's first triple width webbing. At 150mm wide and up to 50% wider than on copycat products, Plus wide webbing provides an impressive canvas on which to showcase corporate logos, promotional messages or safety and cautionary information.

Universal Base

Order code: 889PUH-STD: 2m webbing

Basic Base

Order code: 889PBH-STD: 2m webbing

Surface Fixed Base

Order code: 889PF-STD: 2m webbing

Socket Fixed/Removable Base

Order code: 889PR-STD: 2m webbing

Magnetic Base

Order code: 889PMAG-STD: 2m webbing



360 Rotating Tensabarrier

The 360 Rotating Tensabarrier offers all the benefits of the Advance Tensabarrier®. It incorporates a 360 degree rotating head that allows fast reorganisation of a queue layout, so is ideal for locations that experience regularly fluctuating queuing numbers. With this post you can change your queue layout without moving around posts, ensuring minimal disruption.

Rotating Cassette Head

Universal Base

Order Code: 360U

Basic Base

Order Code: 360B



890 Slimline

Featuring a minimalist two inch post diameter, the 890 Slimline range combines the aesthetics of a lower profile post with a full-size head assembly, making it 100% compatible with the wide range of Tensabarrier® accessories.

Universal Base

Order code: 890U-STD: 2.3m webbing | 890U-MAX: 3.65m webbing

Basic Base

Order code: 890B-STD: 2.3m webbing | 890B-MAX: 3.65m webbing

Surface Fixed Base

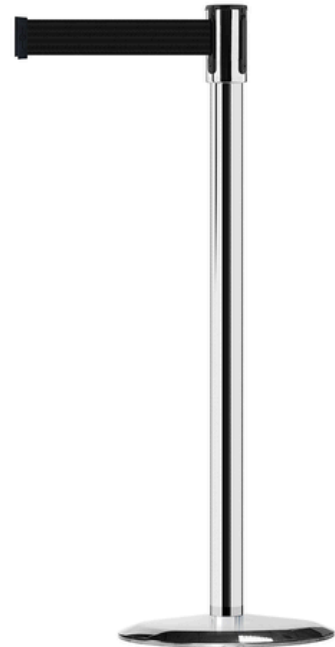
Order code: 890F-STD: 2m webbing

Socket Fixed/Removable Base

Order code: 890R-STD: 2m webbing

Magnetic Base

Order code: 890MAG-STD: 2m webbing



RB1 RollabARRIER®

The original and still the only fully-featured wheeled retractable barrier, RollabARRIER® is another patented Tensator® innovation. Whilst copycats may claim to offer the same mobility benefits, only RollabARRIER® has the patented nesting feature which allows up to three posts to be moved around together, meaning queue configurations can be set up and dismantled up to 3x faster than with any other wheeled barrier on the market. RollabARRIER benefits don't end there, however, as its nesting base also allows Rollabarriers to be safely stowed away using up to 50% less floor space than standard Tensabarriers.

RB1 Rolla Base

Order code: RB1-STD: 2.3m webbing | RB1-MAX: 3.65m webbing

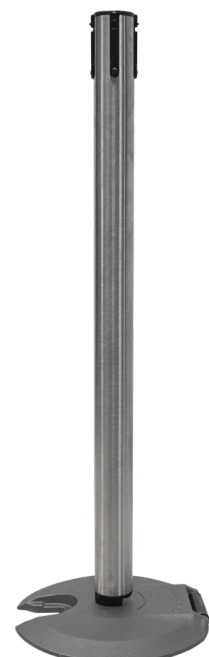
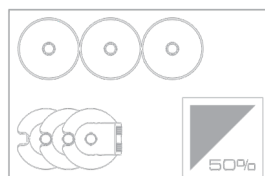
RB1T2 RollabARRIER® Dual

Order code: RB2-STD: 2.3m webbing | RB2-MAX: 3.65m webbing



Nesting Feature

Nesting feature allows up to 3 posts to be moved together and saves up to 50% in storage space.



TCL Tensaclear™

TensaClear™ provides all the functionality of a standard Tensabarrier® with the added unique promotional opportunities created through the use of a transparent post. Made from polycarbonate, the post is crystal clear and incredibly tough, making it ideal to fill with promotional items, anything from gumballs to coffee beans! Alternatively, it can be filled with a printed message or logo, an ideal opportunity to strengthen your brand. The post can be filled in the Tensator® factory or on the customer's site through the use of the easily removable and replaceable cassette head.

Universal Base

Order code: TCLU-STD: 2.3m webbing | TCLU-MAX: 3.65m webbing

Basic Base

Order code: TCLB-STD: 2.3m webbing | TCLB-MAX: 3.65m webbing



Tensabarrier® Gallery

The Gallery Tensabarrier® stanchion is the perfect solution for crowd control and queue management at museums, galleries, auto showrooms and retail displays. The Gallery Tensabarrier® stanchion keeps people at a safe distance from a restricted aread without blocking their view.

Universal Base

Order code: 8G1U-STD: 2.3m webbing | 8G1U-MAX: 3.65m webbing

Basic Base

Order code: 8G1B-STD: 2.3m webbing | 8G1B-MAX: 3.65m webbing



Health & Safety Posts

As the inventors of Tensabarrier, the safest retractable barrier on the market, Tensator® understands the importance of a safe working environment. With our wide range of health & safety products, we can help you reduce the risk of accidents in the workplace by clearly defining safe walkways, restricting access to dangerous areas and identifying potential hazards before they can cause harm.

886 Facility

A rugged post and base suitable for rapid deployment in demanding conditions, the 886 Facility is available in a range of standard plastic colours with a choice of hazard webbings included in either 2.3m or 3.65m lengths. Alternatively, upgrade to a custom webbing to include your own messaging or choose 150mm wide webbing for added visual impact. A screw fixing between post and base allows for quick and easy set up and dismantling. The addition of a protector ring around the post tube gives added protection to the cassette. A patented Dual-Line 886 is also available.

Order Code:
886-STD: 2.3m webbing
886-MAX: 3.65m webbing
886T2-MAX: 3.65m webbing

colours available:



| | | | |
|-----------|-------|-----------|---------|
| height | 960mm | tube O.D. | 63.50mm |
| base dia. | 485mm | weight | 7.5kg |



875 Popular

With its hard wearing black cast iron base, Tensator's best-selling Popular post is ideal for markets, warehouses and other utilitarian applications. This post is available in all plastic colours and as a twin pack.

Order Code:
875-STD: 2.3m webbing
875-MAX: 3.65m webbing

colours available:



| | | | |
|-----------|-------|-----------|---------|
| height | 940mm | tube O.D. | 63.50mm |
| base dia. | 354mm | weight | 7.4kg |



885 Outdoor

Easily filled with sand or water when deployed to make up a robust, stable barrier, the empty plastic base of the 885 Outdoor post is lightweight and easy to transport. The post conveniently screws into the signature grey 885 Outdoor base for rapid assembly and break down. Choose from one of 5 standard plastic post finishes. Supplied with a choice of standard webbings in 3.65m length, or alternatively upgrade to your own custom webbing.

Order Code:
885-STD: 2.3m webbing
885-MAX: 3.65m webbing
colours available:



| | | | |
|-----------|-------|-----------|--|
| height | 940mm | tube O.D. | 63.50mm |
| base dia. | 380mm | weight | 0.8Kg when empty 9.2kg when filled with water |



887 Utility

Featuring a heavy-duty steel post and a hard-wearing cast iron base with a black NoScuff™ ABS base, Tensator's 887 Utility Post is a rugged performer and a stand-out in its class. Available in your choice of a red or yellow high visibility powder coated finish, with a 2.3m or 3.65m length webbing cassette with standard hazard markings.

Order Code:
887-STD: 2.3m webbing
887-MAX: 3.65m webbing

colours available:



| | | | |
|-----------|-------|-----------|---------|
| height | 970mm | tube O.D. | 63.50mm |
| base dia. | 345mm | weight | 10.75kg |



888 Safety Post

With its striking, high contrast black cassette head atop a slim 2" diameter yellow or red powder coated steel post, Tensator's 888 Safety Post makes an attention grabbing barrier, ideal for safety and security applications. Your choice of a 2.3m or 3.65m length webbing cassette with standard hazard markings complete this stand-out barrier.

Order code:
SFT-STD: 2.3m webbing
SFT-MAX: 3.65m webbing

colours available:



| | | | |
|-----------|-------|-----------|-------|
| height | 970mm | tube O.D. | 51mm |
| base dia. | 342mm | weight | 9.5kg |



SA1 Stowaway Post

Compact and lightweight the SA1 Stowaway Post conveniently attaches to its matte black base slats via an easy-fix screw mounting. Once disassembled, the SA1 can be safely stowed in its handy carrying bag. The option of a 4-pack Stowaway kit allows the user to quickly set up a highly visible and secure perimeter in minutes. Combine one of 5 standard plastic colour post finishes with a 3.65m webbing in your choice of standard hazard markings.

Order Code:
SA1: 3.65m webbing
SA-BAG: Stowaway Bag

colours available:



| | | | |
|-----------|-------|-----------|----------------------------|
| height | 930mm | tube O.D. | 64mm ^(per post) |
| base dia. | 750mm | weight | 3.1kg |



Tensacone Topper

The innovative TC114 Topper is a quick and easy way to restrict access to unsafe areas by transforming a standard road traffic cone into a highly effective barrier. Supplied in a bright orange finish and designed to fit on top of most typical road cones, the TC114 Topper is fitted as standard with 3.65m of webbing in a choice of standard hazard markings.

Order Code:

TC114: 3.65m Webbing

colours available:



TC114 Signage Holder

Turn your TC114 Topper into an effective signage display with the addition of a TC114 Signage Holder. Designed for tool-less assembly, the Signage Holder snugly fits into the expansion slots on the Topper. Signage is available in your choice of portrait or landscape format and in a range of different colours. Alternatively upgrade to custom signage and create your own choice of message.

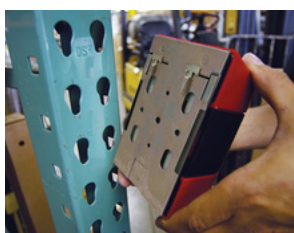


Tensabarrier Wall Units

Where space is restricted or an existing flat vertical surface is available for mounting purposes, Tensabarrier® Wall Units are the ideal solution for restricting access without taking up any valuable floor space. Tensator's innovative thinking has even provided for fully recessed units with zero encroachment into aisle space. Featuring the same originally patented braking mechanism as Tensabarrier® posts, you can rely on Tensator's wall units as being the safest on the market. Choose from a wide variety of designs and webbing lengths to find the idea wall unit for your environment.

All Mounting options

Tensabarrier® wall units offer a choice of different mounting options for easily installation on any surface.



Rack Mount (W)

The Rack Mount clips to the keyholes on standard warehouse racking for instant mounting and removal.



Glass mount (G)

The Glass Mount has strong adhesive pads, which attach the wall unit to any glass fixing.



Removable (R)

Slides onto a mounting plate, which is screwed into a wall, providing a semi-permanent installation.



180 Rotating Wall Unit

Incorporates all the benefits of a standard Tensabarrier wall unit, with the added benefit of a rotating cassette holder, enabling one unit to cordon off areas at different angles within 180 degrees quickly and easily without the use of tools.



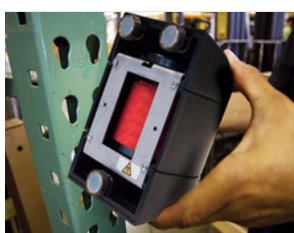
Clamp (C)

Ideal for mounting to an upright, such as a pole or warehouse storage rack. Simply tighten screws on the hose clamp for fast, secure mounting.



Standard (S)

The Standard Mount easily and securely screws onto a wall or sturdy surface. Three screws are concealed by end caps for discreet mounting.



Magnetic Mount (M)

Powerful magnets fasten the wall unit to almost any metal surface. This mount can be removed with a simple twist and pull motion.

Tensabarrier Wall Units

Plastic Cap colour Choices 897, 897P & 899:
Red, Yellow, Black, Chrome. Custom side exit available on 897 and 899.



897P MIDI PLUS
150mm wide webbing
2m webbing

Order Code:
897P

899 MAXI
7.7m or 9m webbing

Order Code:
899

897 MIDI
4.6m webbing

Order Code:
897



891 MINI WALL MOUNT
2.3m or 3.65m webbing length,
black ABS finish.

Order code: 891
MOUNTING OPTIONS:
Standard or magnetic

891 Mini Wall Mount

896 HEAVY DUTY WALL MOUNT:

2.3m & 3.65m webbing length

- Constructed in steel & powder coated finishes

Order Code:

896CM Concealed Mount
(896 specify mounting option & tape end)

MOUNTING OPTIONS:

Concealed Mount, Magnetic Mount,
Removable or Standard Mount



896 Heavy
Duty



896CM
Concealed Mount

892 RECESS WALL MOUNT

2.3m or 3.65m webbing length.

Order code: 892



892 Recess Unit

Tape end options



STANDARD WEBBING END (STE)

Order with either a STE Wall Receiver for regular use or 898 Wall Receiver for heavy duty applications. Both options feature a secure tape end lock to prevent accidental webbing release.



PANIC BREAK WEBBING END (PBTE)

Use to create a simple emergency exit in both directions. Order with STE Wall Receiver.



MAGNETIC WEBBING END (MTE)

Attaches securely to steel surfaces and allows emergency exit in both directions.



WIRE CLIP WEBBING END (WCE)

Our innovative clip for use with warehouse racking loops around uprights, and clips back onto the webbing securing it tightly.

Whatever Your Requirements, Tensator® Has A Finish For You.

Tensator® offers a wide pallet of colours and finishes, ensuring just the right look for any application and décor. From powder coated paints that match any interior, to the warm and luxurious look of solid brass, or the cool crisp look of stainless steel, we can also custom finish any metal post to meet your needs.

POWDER COATED: ECONOMICAL, EXTREMELY DURABLE & RESISTANT TO WEAR



33S Satin Black



23 Blue



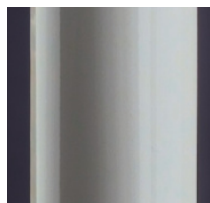
28 Green



32 White



91 Light Metallic Silver



92 Dove Grey

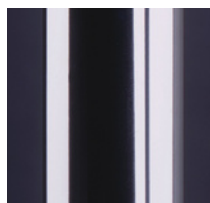
73 Hammer Grey
(textured)80 Charcoal Grey
(textured)

21 Red

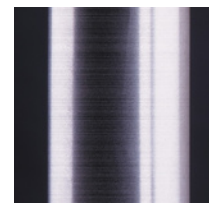


35 Yellow

METAL FINISHES:



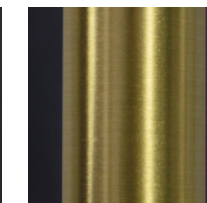
1P Polished Chrome



1S Satin Chrome

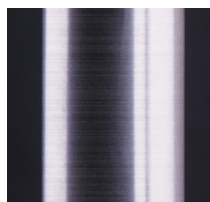


2P Polished Brass



2S Satin Brass

STAINLESS MATERIAL:



3S Satin Stainless

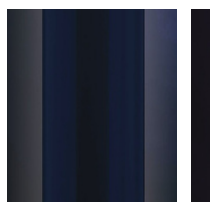


3P Polished Stainless

*Stainless material is only available for the following TensabARRIER® models:

- 890U & 890B
- 889U & 889B
- 889T2U & 889T2B
- 889MAG & 889T2MAG & 889PMAG
- RB1 & RB2

PLASTIC MATERIAL UPVC: Only available for TensabARRIER® models utilising plastic posts



33 Black



32 White



35 Yellow



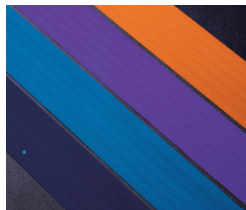
21 Red



23 Blue

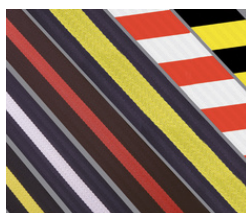
Webbing Selection Guide

SOLID & FLUORESCENT



| | |
|----------------------------|----------------------------|
| B1 White (White) | L5 Blue (PMS 2748c) |
| B5 Grey (PMS 445c) | L7 Dark Blue (PMS 534c) |
| B7 Dark Grey (PMS 446c) | L9 Navy Blue (PMS 533c) |
| B9 Black (PMS black c) | O5 Orange (PMS 1585c) |
| G2 Light Green (PMS 2748c) | P5 Purple (PMS Med Purple) |
| G6 Green (PMS 7731c) | R5 Red (PMS 199/186c) |
| G7 Dark Green (PMS 7736c) | R7 Maroon (PMS 499c) |
| L3 Light Blue (PMS 285c) | Y5 Yellow (PMS 7405c) |

STRIPED AND CHEVRON*



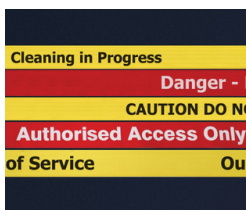
| |
|--------------------------------|
| D3 Red Chevron (PMS 199c/186c) |
| D4 Yellow Chevron (PMS 7405c) |
| S1 Blue Stripe (PMS 534c) |
| S2 Red Stripe (PMS 199c/186c) |
| S3 White Stripe |
| S4 Yellow Stripe (PMS 7405c) |

CUSTOM PRINTING*



Upgrade to a custom webbing and create your own design masterpiece in either standard 50mm or eye-popping 150mm width. All custom Tensabarrier webbings are digitally created so your design can use unlimited colours. Tensabarrier webbing is always dye-sublimated which means your logo or message won't scratch or peel off in use, unlike screen print used on poor quality copycat products.

PRE-PRINTED MESSAGES - DOUBLE SIDED PRINT*



| | |
|------------------------|------|
| Cleaning in progress | YC |
| LIFT OUT OF SERVICE | YL † |
| Authorised Access Only | RA |
| Beware Open Pit | YO |
| Caution - Do Not Enter | YA |
| Danger Forklift Trucks | YG** |
| No Entry | RB |
| EMERGENCY EXIT | GE |

All our Pre-Printed Message webbings are created using the same dye sublimation process as our custom prints, so unlike cheaper imitations which use screen printing, you can be sure that the message won't scratch or peel off.

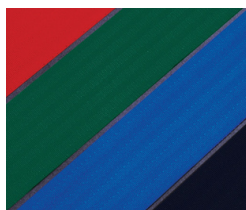
†Message printed on one side only **Webbing not available in 11' 11"

NIGHTVIEW™ WEBBING*



NightView™ features twin reflective strips which are woven directly into the webbing fabric, improving visibility and safety in low-light conditions. Any new Tensabarrier® product can be supplied with NightView™ webbing. Some existing Tensabarrier® products can be retro-upgraded to NightView™ webbing. Ask one of our specialists for more information.

PLUS WIDE WEBBING*



Standard colours*

| |
|----------------------------|
| B9W Black (PMS Black) |
| G7W Dark Green (PMS 7736c) |
| L5W Blue (PMS 534c) |
| R5W Red (PMS 199c/186c) |

Chevron

| |
|--------------------------------|
| D3W Red (PMS 199c/186c) |
| D4W Yellow Chevron (PMS 7405c) |

Pre-Printed*

| |
|------------------------------|
| No Access |
| RAW (White on PMS 199c/186c) |
| RBW (White on PMS 199c/186c) |
| Caution |
| YAW (Black on PMS 7405c) |

Striped

| |
|-------------------------------|
| S3W White Stripe (White) |
| S4W Yellow Stripe (PMS 7405c) |

Post Top Signage

POST TOP SIGNAGE

Turn any Tensabarrier into an attention-grabbing signage post by adding one of our wide range of post-top signage holders. Designed for fast-fit, tool-free installation, our signholders sit securely on the top of any Tensabarrier®.

- Fully framed, top-loading message holder available in standard sizes
- Portrait or landscape orientation
- Message fits between clear acrylic panes
- Choose from a range of standard messages, upgrade to have Tensator's design team create your custom message, or alternatively, make your own signage insert.

Order Code:

- Tensabarrier® Sign Holder - Black - A4 Portrait - TB-SHA4P-33S
- Tensabarrier® Sign Holder - Black - A4 Landscape - TB-SHA4L-33S
- Tensabarrier® Sign Holder - Black - A3 Portrait - TB-SHA3P-33S
- Tensabarrier® Sign Holder - Black - A3 Landscape - TB-SHA3L-33S

| |
|------------------|
| Light Duty |
| Standard A3 & |
| A4 Clear inserts |



TELESCOPIC POST

Tensator's 893 Telescopic Post is a flexible signage solution that can be incorporated into your queuing system and raised above head level to create a more visible sign, enabling more effective guidance and instruction. The Telescopic post height can be easily adjusted without the use of tools and locked into place allowing an extension of any height between 1480mm and 2300mm. When lowered, the extension tubes slowly retract back into the post to avoid injury.



Tensabowl®

Unlock the power of impulse purchasing by transforming any Tensabarrier® into a merchandising hotspot by adding a Tensator® post-top Merchandising Bowl. Featuring tool-free installation, simply pop the highly durable polycarbonate Merchandising Bowl on top of any Tensabarrier®, where it will sit securely held by our innovative easy-fit gripper, load up with merchandise, then sit back and watch the pounds roll in. We've seen our Merchandising Bowl increase impulse purchases by up to 400%!

- Durable, flexible polycarbonate construction
- Quick and easy tool-free installation
- Fits onto any existing Tensabarrier® or Tensator® In-Queue Merchandising post
- Upgrade to add 70mm x 226mm integrated signholder for promotional messages
- Optional dividers create 2 separate compartments

Order Code:
PA6 Merchandising Bowl
PA12 Merchandising Bowl with POS strip

| | | | |
|----------|-------|--------|-------|
| diameter | 325mm | weight | 0.6kg |
| height | 255mm | | |



Impulse Tower

If you like our Merchandising Bowl, then you'll love our Impulse Tower! Generate 4x impulse power on a standard Tensabarrier® footprint. Its standalone circular design allows the Impulse Tower to be shopped from 360 degrees.

Maximum revenue boost per square foot of floor space.

- High clarity durable polycarbonate construction resists scratching
- Large capacity reduces re-stocking
- Add bowl dividers to merchandise multiple lines in each bowl
- Lightweight and easy to reposition
- Supplied fully assembled; position, load up and start selling
- Upgrade to add 70mm x 226mm integrated signholder for promotional messages

Order Code: IMPULSE TOWER

| | | | |
|----------|--------|--------|------|
| base dia | 340mm | weight | 14kg |
| height | 1290mm | | |



Tensabarrier® Beam Banner

Tensabarrier Banner can be fixed on selected Tensabarriers to convert any space into an advertising opportunity. The banner consists of 2 posts, an aluminium beam and a mesh or PVC banner, or as a beam and banner to be retrofitted to the any existing Tensabarriers.

We offer options for temporary and permanent banner solutions. Please speak to one of our specialists to discuss the best banner options for your needs.

Two standard sizes: available 1.5 metres and 2 metres in length, 820mm height.



Café Banner

Ideal for creating a secure perimeter or as a space divider, Tensator's Café Banner range is both robust and portable. Easy to install, dismantle and store, Café Banners are flexible, cost-effective and can be custom branded to show visually impactful information or promotional messages.

Tensator® offers a range of Café Banners for indoor or outdoor usage. Ask one of our specialists for assistance in finding the right Café Banner for your needs.

Stainless Steel Café Banner

Tensator offers its Café Banners in two grades of stainless steel. 304 grade is available for indoor use only. For outdoor usage, choose 316 grade for a rust retardant solution. Both options feature stainless steel posts with heavyweight bases, stainless steel connectors and aluminium rails top and bottom to hold the banner taught.



Chrome Café Banner

Recommended for indoor use only, Tensator's Chrome Café Banner uses chrome plated steel posts, chrome plated connectors and an aluminium top rail.



Tilted Transportation Cart

Store and move Tensabarriers easily and efficiently with our Tilted Transportation Cart from Tensator®. The cart can hold up to 14 Tensabarrier® posts or Lawrence® stanchions. Ergonomic design means that even on the highest level, posts do not have to be lifted above waist height, meeting health & safety regulations on safe lifting. Heavy duty corner buffers prevent accidental damage to both the Storage Cart and its surroundings, and towing plates allow Storage Carts to be moved together.

- Comprises of 14 shelves for slotting Tensabarriers in place.
- Handlebar at optimal 990mm height for handling heavy loads.
- Optional second handlebar available for other end of cart.
- Available in a range of colours and finishes upon request.



APG Airport Passenger Guidance

The APG is a compact, mobile passenger guidance solution that can be quickly and easily deployed around the wing of an aircraft to enable safe embarking and disembarking of passengers.

- Fitted as standard with anti-static NightView™ webbing for class-leading visibility in low-light conditions
- Easy to use hand-wound mechanism enables webbing extension up to 23m per spool
- Locking pins on each spool hold webbing securely in place
- Compact footprint and large wheel design make for easier movement
- Full steel frame includes zinc undercoat for extra weather protection

Order Code:

APG2 - APG including concrete base

NIGHTVIEW™

High contrast chevron webbing with integrated NightView™ stripes is standard on all APG units.



Tensaguide® Plus

Tensaguide is a modular, multi-functional extrusion based system comprising posts and beams which can be cut to custom lengths to create tailor made configurations. Posts can be surface fixed or free-standing and draw from the same range of bases and finishes as our standard Tensabarriers to bring a unified look and feel to your installation.

A wide range of extrusion infill trims open up vast possibilities to use glass, acrylic or other panel infills to suit any environment. Media infill panels can be printed with any messages or branding and are easily changed out, creating an ideal platform for eye-catching advertising messages.



Maintaining Chrome and Brass

Tensator's posts are offered in a number of high quality finishes, of which some require maintenance. We have put together some helpful advice to help you keep your Tensabarrier® in tip-top condition.

Chrome

Cleaning chrome brings to mind bathroom taps and kitchen items such as toasters. Liquid metal polish works as well on chrome as it does on silver. Apply a coating of polish using a sponge or soft cloth, leave it to dry, then clean with a cotton cloth, and buff with a chamois cloth if necessary. If you are in the habit of wiping chrome fixtures regularly, you probably do not need to polish them too often, as they will already be in a bright and shiny condition.

Brassware

Liquid metal polish works well to clean brass classic post tops. Most brassware has a pattern, so there are "nooks and crannies" that require cleaning and polishing on the brass surface. Apply a coat of polish with a sponge or soft cloth. As soon as the coating of liquid metal polish dries, use a cotton cloth to wipe off the polish, then a chamois cloth to bring out the shine. To remove any polish residue between the pattern lines, try cotton swabs. If the brass is badly tarnished, it may be necessary to apply polish two or three times.

Maintaining Stainless Steel

The best way to maintain your stainless steel is to keep it clean. The term "stainless" is deceptive. The film of chromium on the surface is what makes it so durable. If not maintained, stainless steel can stain and corrode. This can happen with simple everyday contaminants like grease, dirt and oils.

Use a Wet Cloth and Mild Detergent

When something spills on your stainless steel surface, wipe it up with a wet cloth. The sooner stains are removed the easier they are to clean. If a wet cloth doesn't do the trick, you can add a mild detergent such as dish soap. Most of the time stainless steel cleaners are unnecessary. Soap and water is gentler on your surface and should be attempted first before using harsh chemicals.

Use Glass Cleaner to Remove Fingerprints

When equipment and small wares are touched throughout the day, fingerprints get left behind. Oils from fingerprints can scratch the mirror polish on stainless steel. Glass cleaner is very effective at getting rid of these stains.

Dry Immediately After Cleaning

Water spots from hard water can be avoided if the cleaned area is dried immediately. This simple step could save you a headache later. Wipe in the direction of the finish.

Bleach and Chlorine do More Harm Than Good

While bleach is guaranteed to wipe out bacteria, it can cause more harm than good to stainless steel surfaces. It breaks down the protective film on your stainless steel. An ammonia solution is suitable to use in its place.

Never Use Rough Abrasive Sponges and Steel Wools

These rough cleaning utensils scratch the surface of your stainless steel making it more susceptible to rust.

MAINTAINING WEBBING

All webbing can be cleaned using a mild liquid detergent/warm water solution.

TENSATOR®

Your local service partner.

New York, US

Milton Keynes, UK

Frankfurt, Germany

Paris, France

Wrocław, Poland

Bangalore, India

Dubai, UAE

7 **170** **150+**
Regional Employees Countries
Directors covered

MILTON KEYNES
+44 1908 684 600

NEW YORK
+1-800-441-0019

DUBAI
+971 4 2997 228

PARIS
+33 1 43 09 85 00

FRANKFURT
+49 69 3003 89 010

WROCLAW
+48 71 359 3800

BANGALORE
+91 78925 78956