



EN 15512:2009  
DGUV Regel 108-007



supplied by

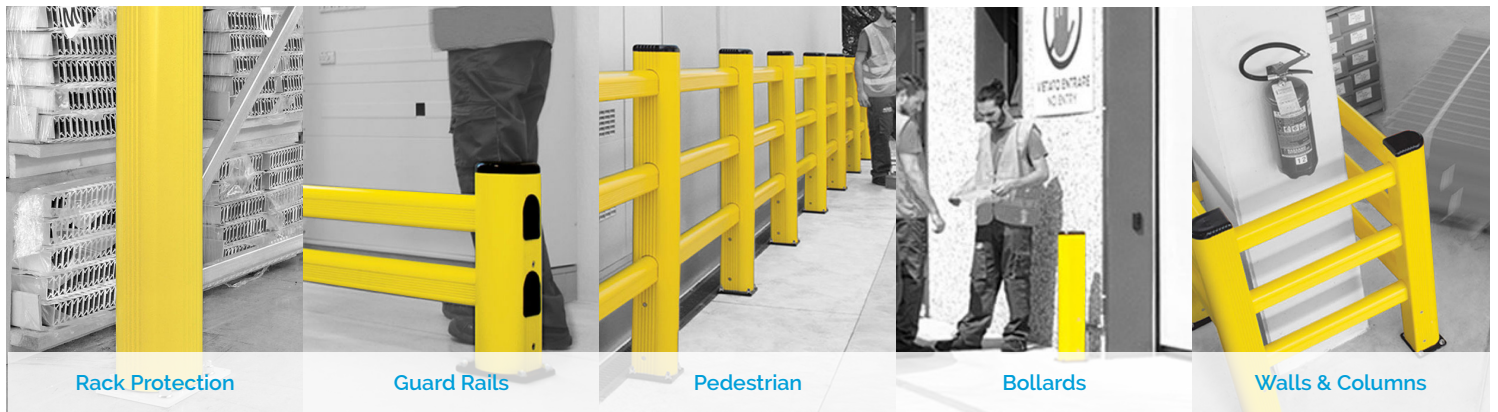
**TENSATOR®**

# IMPACT PROTECTION

An anti-shock reflex impact protection system for racking, walls, pedestrians and vehicles



## IMPACT PROTECTION



Rack Protection

Guard Rails

Pedestrian

Bollards

Walls & Columns

As inventors of Tensabarrier®, the safest barrier on the market, Tensator® understands the importance of a safe working environment. Tensator® has partnered with MPM plastic profiles to supply their latest innovation, Impact Protection.

The Impact Protection range offers workplace protection from equipment and vehicles for the manufacturing, industrial, warehousing and distribution sectors.

The range enables you to identify potential hazards before they cause harm, restrict access to dangerous areas and clearly define workplace policies. Not only does this system protect your workforce, but it also provides essential protection to your building, equipment and assets.



supplied by

**TENSATOR®**



EN 15512:2009  
DGUV Regel 108-007

## TENSATOR® IMPACT PROTECTION CAN HELP PREVENT



Stock Loss



Equipment Damage



Personal Injury



## WHY CHOOSE PVC?

The Impact Protection range is a superior product when compared to other materials, such as metal and expensive polyethylene (PE). The anti-shock reflex characteristics of Impact Protection ensures all assets are protected, without damaging the barrier and it's working environment.



### Long-Lasting

Long life material that requires less maintenance.



### Less Replacements

PVC flexes upon impact and won't damage equipment and flooring.



### Cost-Effective

Up to 97% cost saving on repairs and replacements compared to metal.



### Indoor & Outdoor

Doesn't lose shape or deteriorate, even in external weather conditions.



### Fire Safe

Fire class V0; a self-extinguishing and non-flame spread material.



### Strong Resistance

Antibacterial and saline, gasoline, oil, alcohol and acid resistant.



### Environmentally Friendly

PVC meets RoSH regulations and is 100% recyclable.



### Tested & Certified

Externally tested and certified to meet industry standards..



## QUALITY ASSURED

At Tensator®, we think offering the highest quality product is of the utmost importance. Therefore, each product undergoes vigorous testing in real life situations and by our pendulum machine. These are used for detailed crash reports and to pass impact tests for industry standards, such as **DIN**, **BGR**, **DGUV** and **AFNOR**.



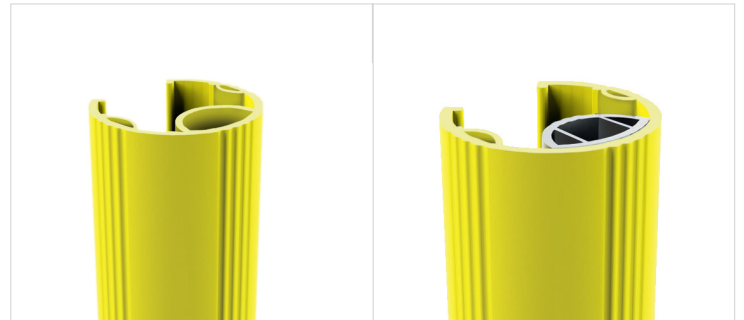
See the video at:  
[tensator.com/impact-protection](https://tensator.com/impact-protection)





## RACKING PROTECTION

*Protects pallet racking and shelving from forklift and other vehicle hits to maintain rack integrity, avoid repair or failure, and ultimately reduce stock loss and personal injury.*



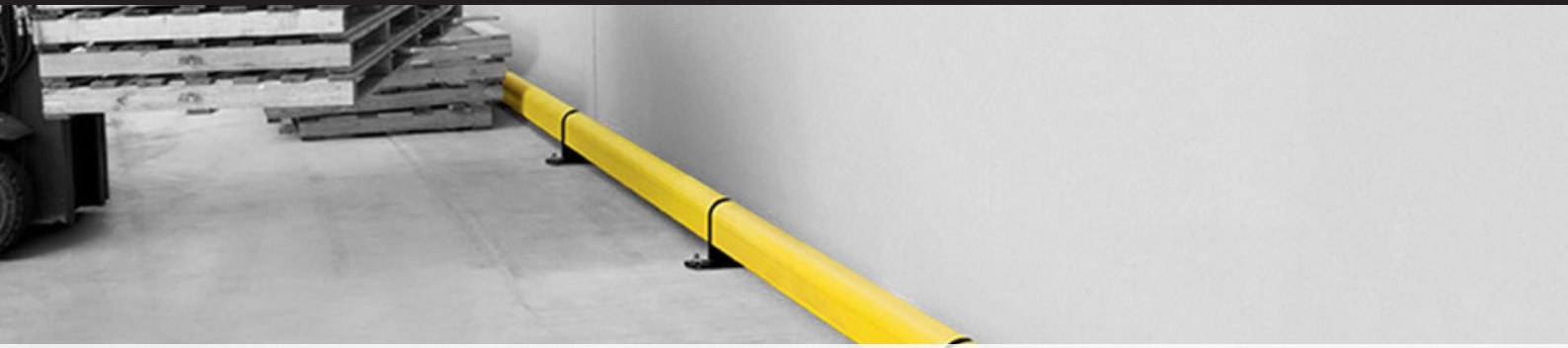
### Rack Upright Protectors

- Protects uprights from fork and vehicle impacts.
- Single and triple shock absorbers for maximum protection.
- Easy to install, clip-on design.



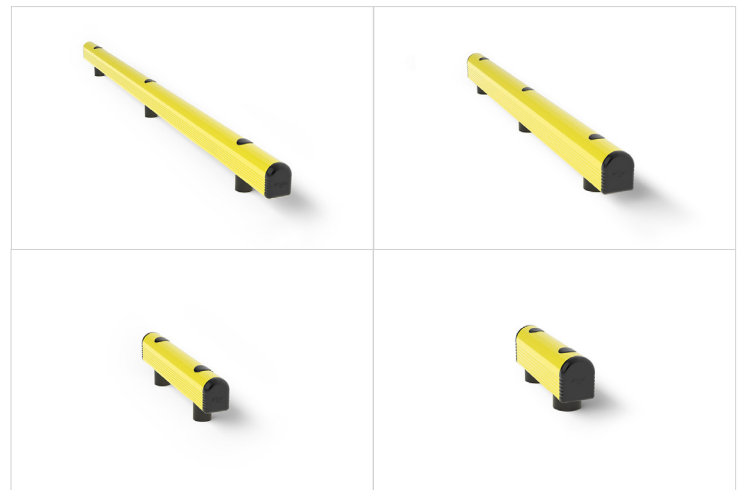
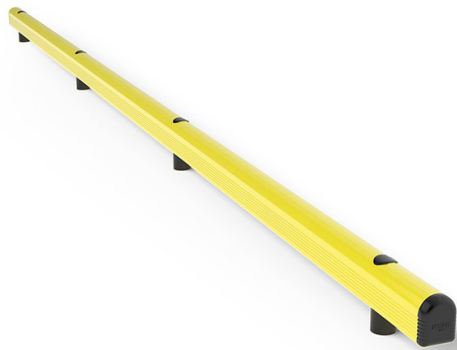
### Rack End Barriers

- Single or double rack end protection.
- Available with reinforced beam for added impact strength.
- Fast installation with floor anchor bolts.



## GUARD RAILS

*Bumper system for protecting walls and other areas from vehicles and like forklifts and trolleys. Ideal for areas where the driver can't see the target area and to avoid wheel clips on low items.*



### Low Guard Rail

- Stop wheel and pallet clips on delicate items stored on the floor.
- Light and heavy-duty models, with additional high resistance anchor resin.
- Up to 4 metre singular lengths, or longer with modular version.



### Mid Guard Rail

- Double beams for added impact resistance.
- Simple installation and cleaning.
- Up to 2.4 metre singular lengths, or longer with modular version.





## PEDESTRIAN

*Cordon off pedestrian areas and protect pedestrians from vehicles and equipment with this range of barriers. Suitable for indoor and outdoor applications with weather and UV resistance.*



### Pedestrian Barriers

- Modular design for long lengths and corners.
- Light and heavy-duty models.
- Optimal height to contain pedestrians and stop vehicle hits.



### Reinforced Barriers

- Additional beam or guard rail for added impact resistance.
- Lower guard rail to reduce wheel and pallet clips.
- Ideal for pedestrian-busy loading areas.



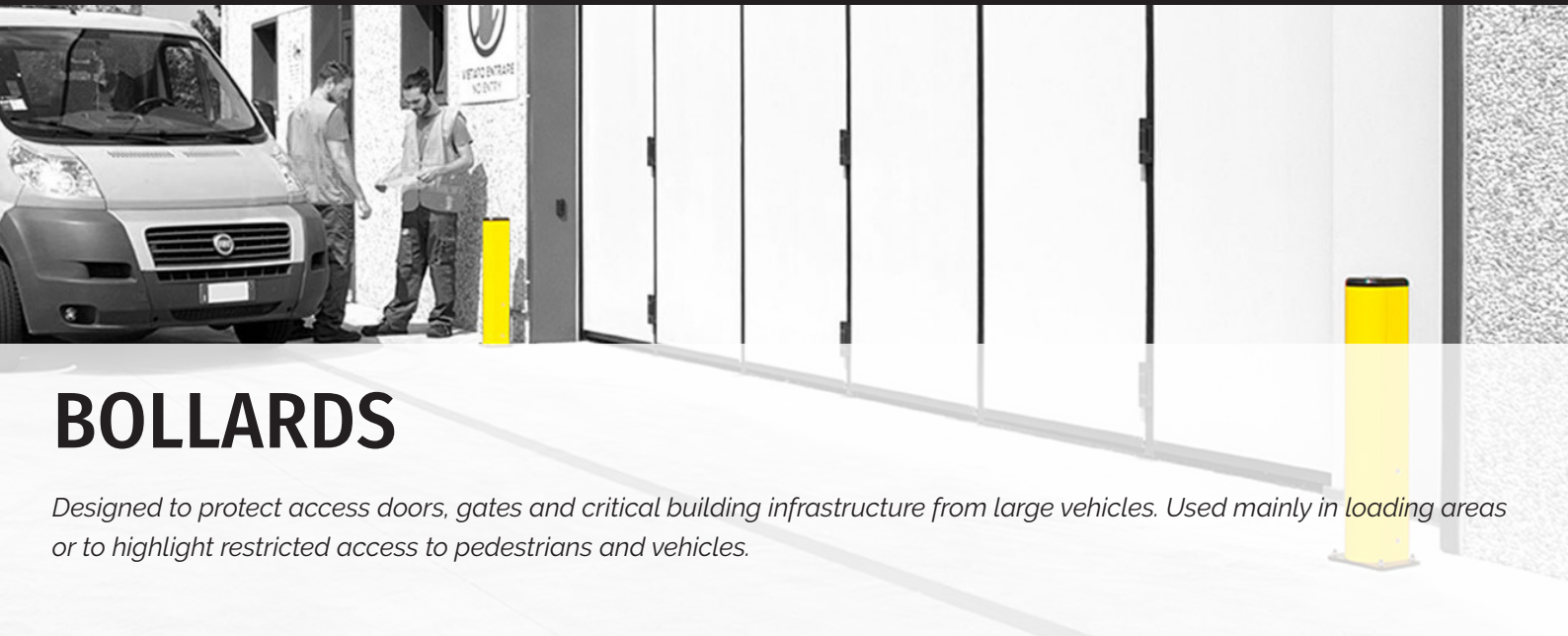
## Door Frame Protection

- For added protection of door frames from vehicles.
- Available in a variety of sizes for larger doors.
- Fast installation with floor anchor bolts.



## Pedestrian Gates

- Gateways to allow access through pedestrian barriers.
- Full door frame model to prevent structural damage from vehicles.
- Light and heavy-duty models.



## BOLLARDS

*Designed to protect access doors, gates and critical building infrastructure from large vehicles. Used mainly in loading areas or to highlight restricted access to pedestrians and vehicles.*



### Rod Bollard

- Rod fixing system with easy removal and replacement.
- Suitable for busy areas where impacts are common.
- Ideal for cleaning and cold rooms.



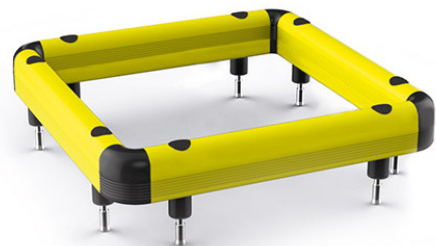
### Anchor Bolt Bollard

- Up to 1.1 metre height.
- Light and heavy-duty models.
- 4 anchor bolt design for easy installation and added impact resistance.



## COLUMN PROTECTION

*Designed to protect critical infrastructure, prevent building collapse and subsequent catastrophic consequences. Can also be used to protect equipment like fire extinguishers, electrical points and medical provisions.*



### Low Column Protection

- Stop wheel and pallet clips.
- Ideal for areas with primarily pallet trucks and LLOPs.
- Customisable to all column widths.



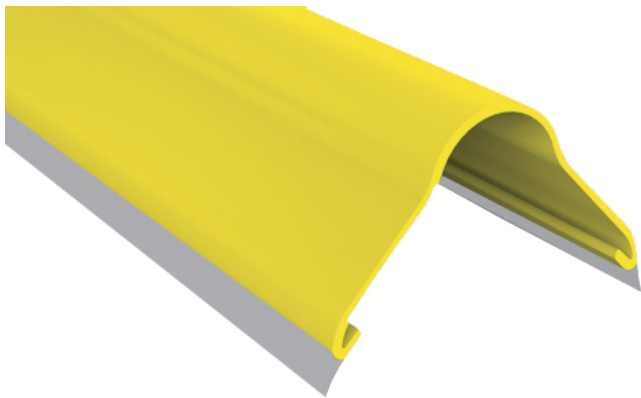
### High Column Protection

- Heavy-duty protection with additional beams.
- Ideal for areas with primarily forklifts and large vehicles.
- Customisable up to 1800mm column widths.



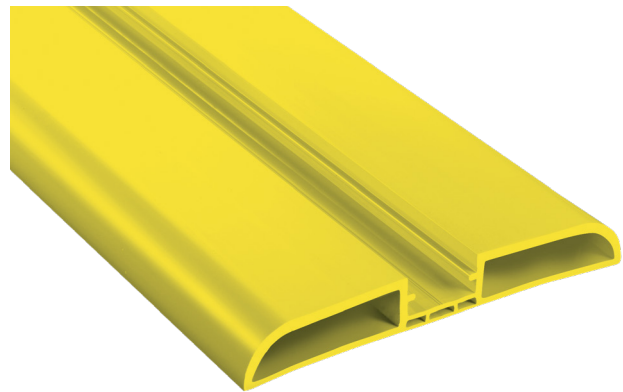
## WALL PROTECTION

*Designed to protect key wall sections that succumb to frequent damage from trolleys, pallets and vehicles. Ideal for the prevention of repairing and replacing walls and equipment.*



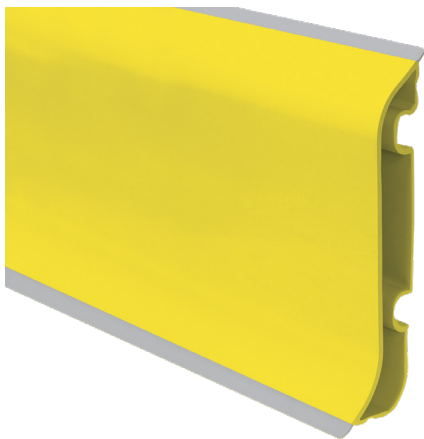
### Corner Wall Protection

- Ideal for protecting pillars and columns from damage and scuffs.
- Quick and easy installation with no protruding parts.



### Mid Wall Protection

- Stop trolleys and pallets damaging walls.
- Corner and end caps for routing around walls.
- Available in 100mm and 150mm heights.



### Kerb Protection

- Stop wheel and pallet clips.
- Corner and end caps for routing around walls.
- Available in 200mm and 300mm heights.



**NEW YORK**  
+1 631 666 0336

**MILTON KEYNES**  
+44 1908 684 600

**DUBAI**  
+971 4 2997 228

**PARIS**  
+33 1 43 09 85 00

**FRANKFURT**  
+49 69 3003 89 010

**WROCLAW**  
+48 71 359 3800